

Liquid End Sheet

LE-22P

When purging solutions, make certain that all tubing is securely attached to the fittings. It is recommended that tubing or pipe lines be shielded to prevent possible injury in case of rupture or accidental damage. Always wear protective clothing and face shield when working on or near your metering pump.

Note: See parts list for materials of construction

A. INSTALLING INJECTION CHECK VALVE

- 1 The purpose of the injection check valve is to prevent backflow from the treated line.
- 2 A 1/2" NPT female fitting with sufficient depth will accept the injection check valve.
- 3 To insure correct seating of the ball inside the injection check valve, the injection check valve should be installed upwards (vertically) into bottom of the pipe.

B. CONNECTING DISCHARGE PIPE

NOTE:

Corrosion resistant 1/2" Schedule 80 or Schedule 120 should be used. DO NOT USE SMALLER PIPE SIZES.

- 1 Discharge valve has a 1/2" NPT male outlet. A short 1/2" NPT union should be connected to both discharge and suction valves so that the metering pump may be removed without disturbing piping.
- 2 It is recommended that Teflon tape be used on tapered pipe threads so that there is a leakproof seal without overtightening of fittings.

**EXCESSIVE FORCE WILL CRACK OR DISTORT FITTINGS.
DO NOT OVERTIGHTEN.**

C. CONNECTING SUCTION PIPE

- 1 Using the same size and material pipe as used on the discharge line, cut the suction pipe to length so that the foot valve is positioned just above the bottom of the solution container. Maximum recommended vertical suction lift is 5 ft (1.5 m).

- 2 It is recommended that Teflon tape be used on tapered pipe threads so that there is a leakproof seal without overtightening of fittings. Suction side leaks are invisible, but if present will cause pump to suck in air during each pump stroke.

D. PRIMING

- 1 Temporarily disconnect the union at the end of the discharge pipe run.

NOTE:

Stroke cannot be adjusted until pump is operating electrically. Turn lower knob while unit is stroking.

- 2 Start pump. Set at 80% speed and 100% stroke.
- 3 As soon as solution begins to enter the discharge pipe, stop the pump.
- 4 The pump is now primed.
- 5 Reconnect union at the end of the discharge pipe.

NOTE:

(a) Pump is normally self-priming if suction lift is not more than 5 ft (1.5m), valves in the pump are wet with water (pump is shipped from factory with water in pump head) and the above steps (D. Priming) are followed.

(b) If the pump does not self prime, remove discharge valve housing and ball and pour water or solution slowly into discharge port until head is filled. Follow step D. Priming thereafter.



8 Post Office Square
Acton, MA 01720 USA
TEL: (508) 263-9800
FAX: (508) 264-9172
<http://www.limpumps.com>

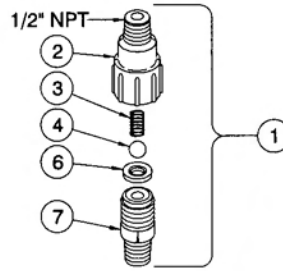


Replaces same of E 7/94
1167.E 2/97

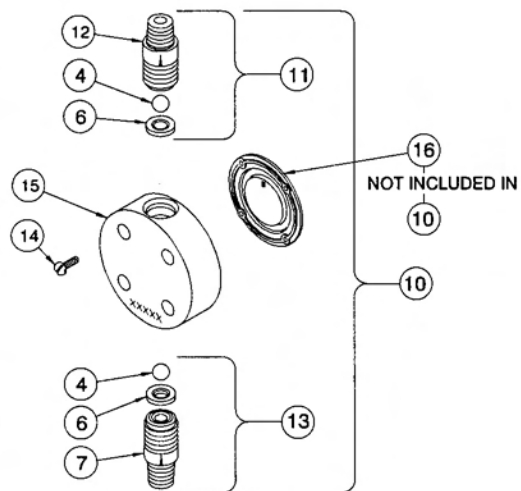
Threaded connections into pumphead are 1" - 12" straight threads.
Do not use Teflon tape. These joints are sealed by seal ring valve seats (item 6 on exploded view).

| Key No. | Part No. | LE-22P Description | QTY |
|---------|----------|---------------------------------|-----|
| 1 | 38270 | Injection Valve Assembly | 1 |
| 2 | 31936 | Injector Fitting, PVDF | 1 |
| 3 | 37341* | Spring | 1 |
| 4 | 10138* | Ball, Ceramic .50 | 4 |
| 6 | 25128* | Seal Ring, Teflon | 4 |
| 7 | 35420 | Valve Seat, PVDF 1/2" NPT | 2 |
| 10 | 38370 | Head Assembly, LE-22P, 1/2" NPT | 1 |
| 11 | | Discharge Valve Assembly | 1 |
| 12 | 35585 | Valve Housing PVDF 1/2" NPT | 2 |
| 13 | | Suction Valve Assembly | 1 |
| 14 | 10340+ | Screw, 10-24 x 3/4" S.S. | 4 |
| 15 | 38245 | Head, 3.0 SI PVDF | 1 |
| 16 | 31419 | Liquifram, 3.0 SI Fluorofilm | 1 |
| 18 | 38271 | Foot Valve Assembly | 1 |
| 20 | 25600 | Foot Valve Seat, Polypropylene | 1 |
| 21 | 10123 | Strainer | 1 |

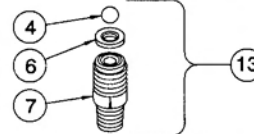
- * Parts included in Spare Parts Kit SP-U5
- + For use with LMI Series M metering pumps order four (4) ea. P/N31112, Srew 10-24 x 1/5" S.S.



1/2"NPT UNION AND 1/2"NPT
 SCHEDULE 80 OR 120 PIPE
 - CUSTOMER SUPPLIED -



NOT INCLUDED IN
 10



1/2"NPT UNION AND 1/2"NPT
 SCHEDULE 80 OR 120 PIPE
 - CUSTOMER SUPPLIED -

