

Metering Pump Component Diagram

Series AA1

Electronic Metering Pump

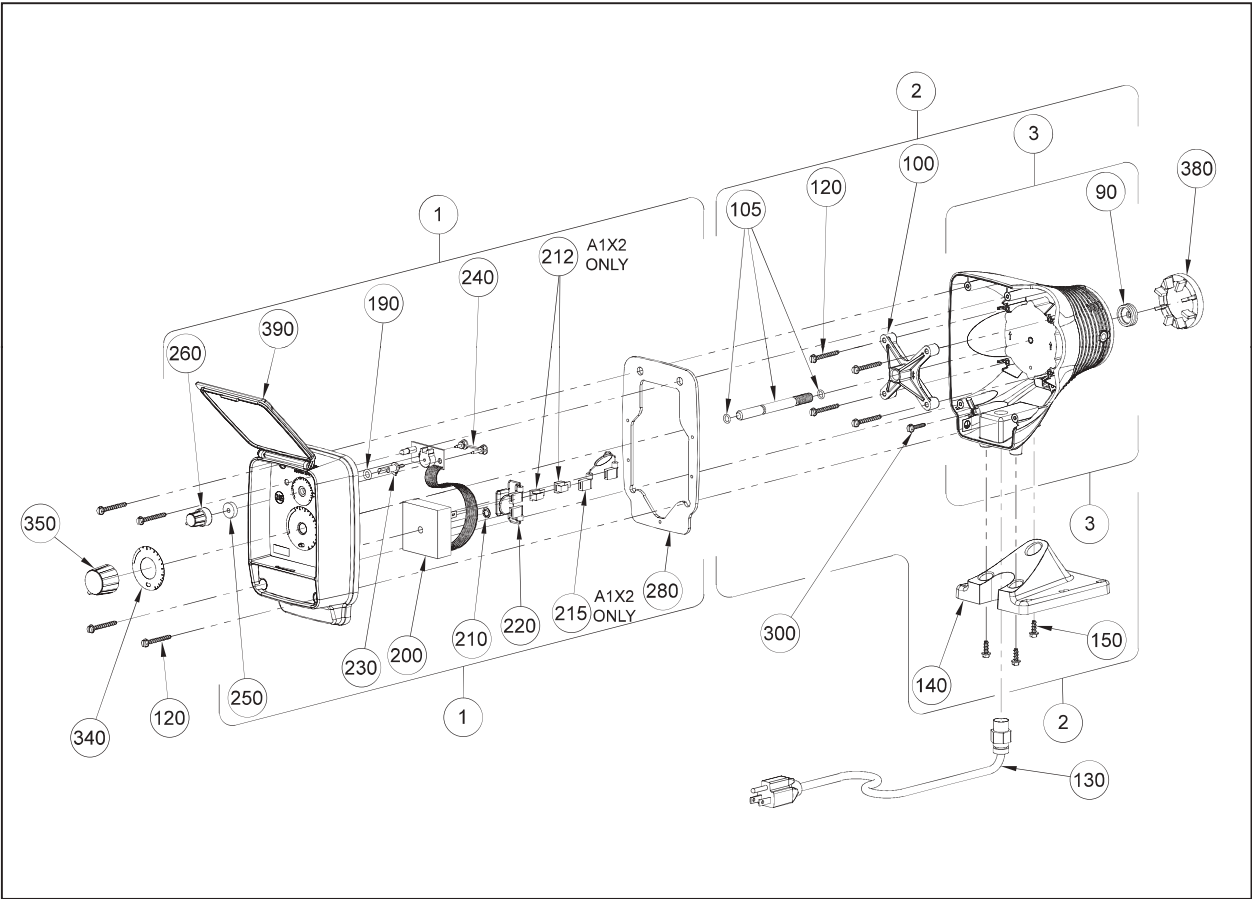
Instruction Supplement

Manual No : 1972

Rev. : B

Rev. Date : 11/2015

SERIES AA1 DRIVE ASSEMBLY EXPLODED VIEW DIAGRAM



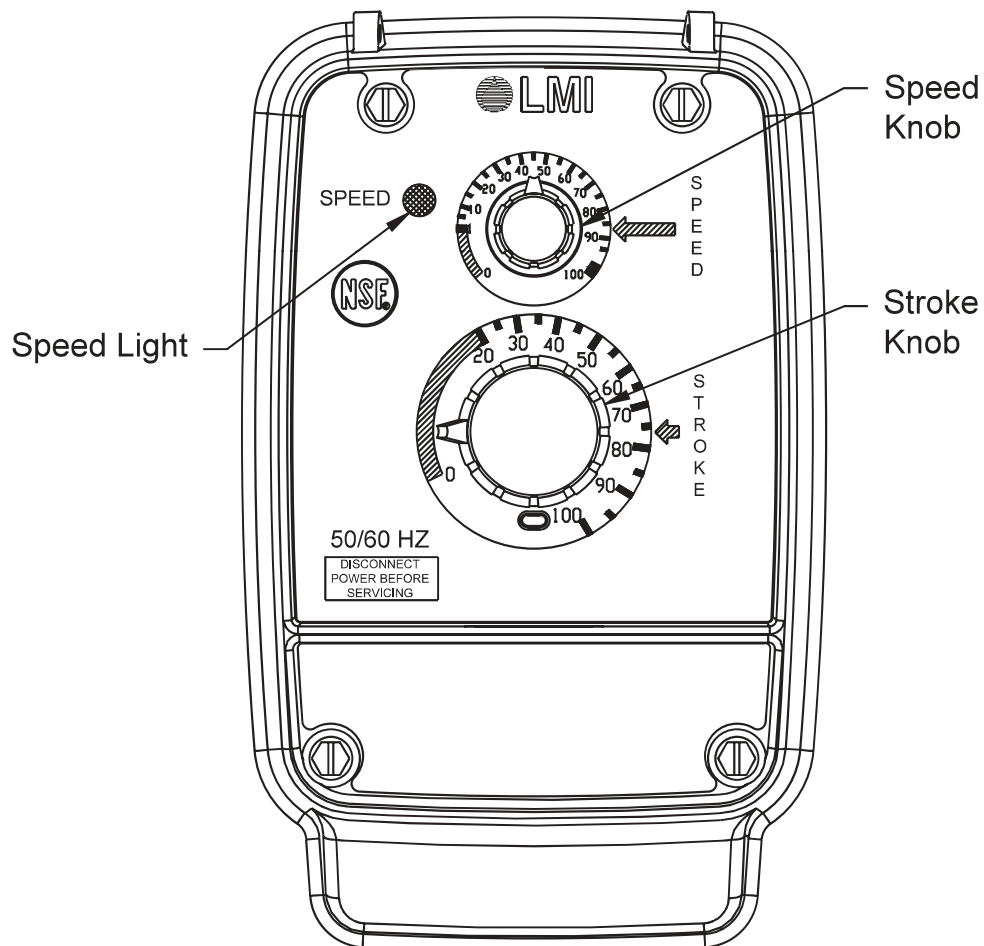
SERIES AA1 DRIVE ASSEMBLY PARTS LIST

Key Number	Model Series	Part Number	Description	Qty
1	AA141, AA151, AA161, AA171, AA181	48013	Control Panel Assembly, 115V	1
	AA142, AA152, AA162, AA172, AA182	48014	Control Panel Assembly, 230V US	1
	AA143, AA145, AA146, AA147 AA153, AA155, AA156, AA157 AA163, AA165, AA166, AA167 AA173, AA175, AA176, AA177 AA183, AA185, AA186, AA187	48015	Control Panel Assembly, 230-250V	1
2	AA141, AA151	48034	EPU w/ Stroke Adjustment, 115V	1
	AA142, AA143, AA145, AA146, AA147 AA152, AA153, AA155, AA156, AA157	48035	EPU w/ Stroke Adjustment, 230-250V	1
	AA161	48036	EPU w/ Stroke Adjustment, 115V	1
	AA162, AA163, AA165, AA166, AA167	48037	EPU w/ Stroke Adjustment, 230-250V	1
	AA171, AA181	48038	EPU w/ Stroke Adjustment, 115V	1
	AA172, AA173, AA175, AA176, AA177 AA182, AA183, AA185, AA186, AA187	48039	EPU w/ Stroke Adjustment, 230-250V	1
3	AA141, AA151	48025	EPU, 115V	1
	AA142, AA143, AA145, AA146, AA147 AA152, AA153, AA155, AA156, AA157	48026	EPU, 230-250V	1
	AA161	48027	EPU, 115V	1
	AA162, AA163, AA165, AA166, AA167	48028	EPU, 230-250V	1
	AA171, AA181	48029	EPU, 115V	1
	AA172, AA173, AA175, AA176, AA177 AA182, AA183, AA185, AA186, AA187	48030	EPU, 230-250V	1
90	AA1	10973	Seal	1
100	AA1	38886	Stroke Adjustment Bracket	1
105	AA1	48012	Stroke Adjustment Shaft Assembly	1
120	AA1	41227	Screw	8
130	AA141, AA151, AA161, AA171, AA181	29033CE	Power Cord Assembly, 115V	1
	AA142, AA152, AA162, AA172, AA182	29039CE	Power Cord Assembly, 230V US	1
	AA143, AA153, AA163, AA173, AA183	29042CE	Power Cord Assembly, 230V DIN	1
	AA145, AA155, AA165, AA175, AA185	29044CE	Power Cord Assembly, 240V UK	1
	AA146, AA156, AA166, AA176, AA186	29046CE	Power Cord Assembly, 250V AUST	1
	AA147, AA157, AA167, AA177, AA187	29048CE	Power Cord Assembly, 230V SWISS	1
140	AA1	37879	Foot	1
150	AA1	38199	Screw	3
190	AA1	34497	O-Ring	1
200	AA1	35708	Pulser	1
210	AA1	10422	Retaining Ring	1

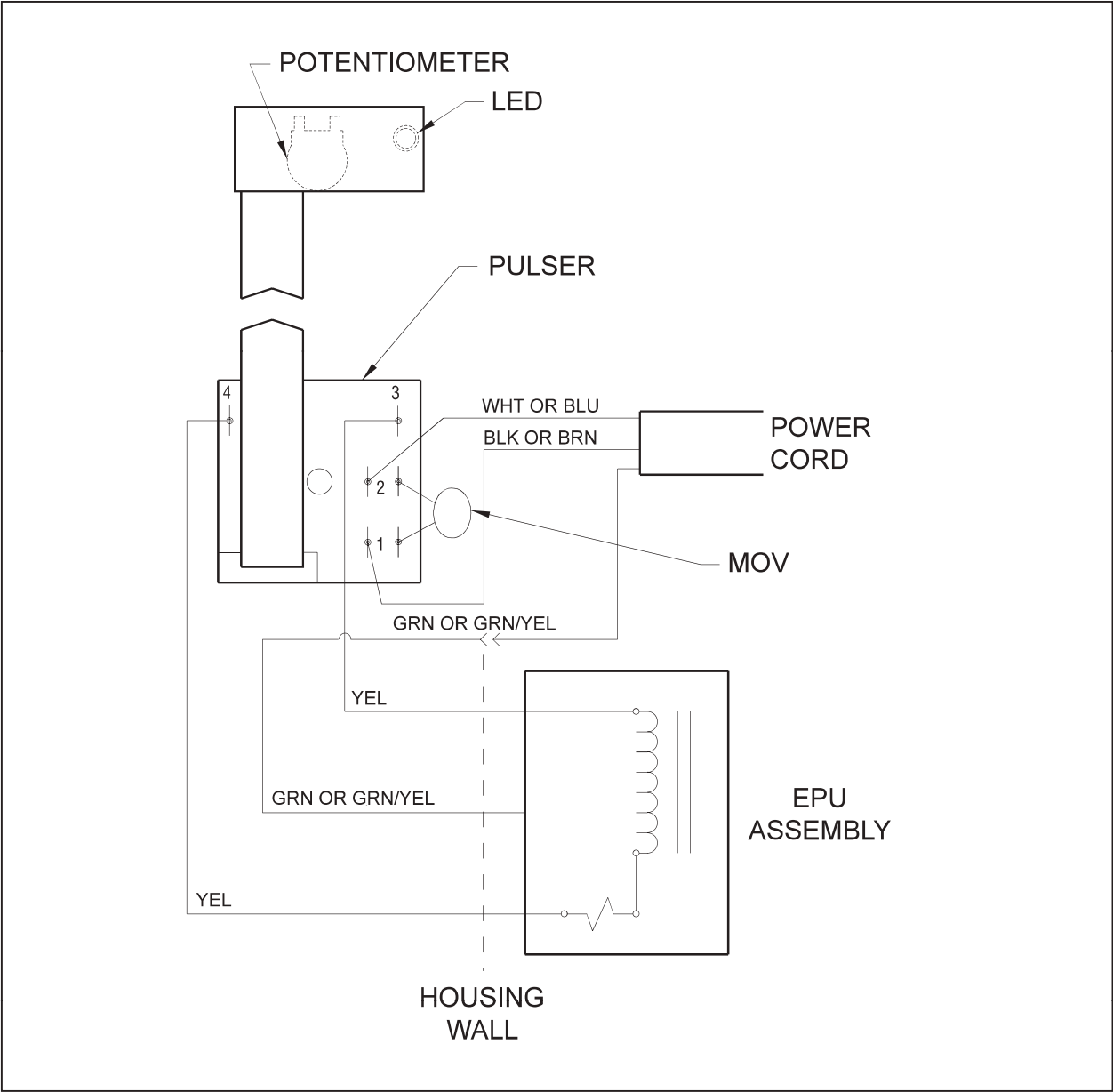
SERIES AA1 DRIVE ASSEMBLY PARTS LIST

Key Number	Model Series	Part Number	Description	Qty
212	AA142, AA152, AA162, AA172, AA182	25507	Adapter	2
215	AA142, AA152, AA162, AA172, AA182	48043	Varistor Assembly, 230V US	1
220	AA141, AA151, AA161, AA171, AA181	35243	MOV and Capacitor Assy, 115V	1
	AA142, AA152, AA162, AA172, AA182 AA143, AA153, AA163, AA173, AA183 AA145, AA155, AA165, AA175, AA185 AA146, AA156, AA166, AA176, AA186 AA147, AA157, AA167, AA177, AA187	35237	MOV and Capacitor Assy, 230-250V	1
230	AA1	35743	Speed Shaft	1
240	AA1	35744	Dual Pin	1
250	AA1	30803	Gasket	1
260	AA1	30709	Speed Knob	1
280	AA1	38887	Gasket	1
300	AA1	41244	Screw	1
340	AA16	30374	Stroke Dial	1
	AA17	29269	Stroke Dial	1
	AA18	29268	Stroke Dial	1
350	AA1	31890	Stroke Knob Assembly	1
380	AA14, AA17	29445	Disk, 0.5	1
	AA15, AA18	29437	Disk, 0.9	1
	AA16	29442	Disk, 1.8	1
390	AA1	37974	Cover	1

SERIES AA1 CONTROL PANEL DETAIL



SERIES AA1 WIRING DIAGRAM



We are a proud member of Accudyne Industries, a leading global provider of precision-engineered, process-critical, and technologically advanced flow control systems and industrial compressors. Delivering consistently high levels of performance, we enable customers in the most important industries and harshest environments around the world to accomplish their missions.



LMI® is a registered trademark of Milton Roy, LLC.
AUTOPRIME™ is a trademark of Milton Roy, LLC.
© 2015, 1997 Milton Roy, LLC.
Specifications to change without notice.

info@lmipumps.com
www.lmipumps.com

