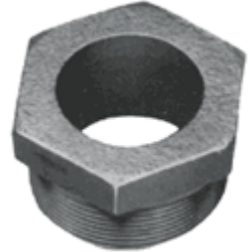


## Accessories For Industrial Pumps

---

### FUME BARRIERS/ADAPTORS Polypropylene or Stainless Steel

Part Number	Description
9015	Barrel Adapter - Polypropylene 2" O.D. (51mm)
9002	Barrel Adapter - Stainless 316 2" O.D. (51mm)
9018	Fume Barrier - Polypropylene 2" (51mm), Viton Seal
9019	Fume Barrier - Stainless 316 2" (51mm), Viton Seal



### STRAINERS Polypropylene or Stainless Steel

Part Number	Description
9011	Polypropylene Mesh - .78"x .078" (19.8 x 2mm)
9012	Stainless 316 Mesh - .78"x .078" (19.8 x 2mm)
9043	PVDF - .78 "x .078" (19.8 x 2mm)



### WALL BRACKETS Recommended for pump storage

Part Number	Description
9006	Wall Storage Bracket



### HAND NOZZLES Brass, PVDF or Polypropylene

Part Number	Description
9017	Polypropylene - 1" O.D. (25 mm) - hose barb intake
9026	Stainless 316 - 1" O.D. (25 mm) - hose barb intake
9028	PVDF - 1" O.D. (25 mm) - hose barb intake
9030	Aluminum Hand Dispensing Nozzle, 1" (25 mm)



Part Number

Description

9029 Clear PVC 1" I.D. x 1.25" O.D. (28 mm x 31 mm)  
Max operating pressure: 30 psi (2 bar)

9032 Clear braided PVC 1" I.D. x 1.25" O.D. (28 mm x 31 mm)  
Max operating pressure: 130 psi (8.9 bar)



**QUICK DISCONNECT  
Polypropylene**

Part Number

Description

125A100C Polypropylene - 1.25" thread x 1" barb (28 mm x 25mm)

