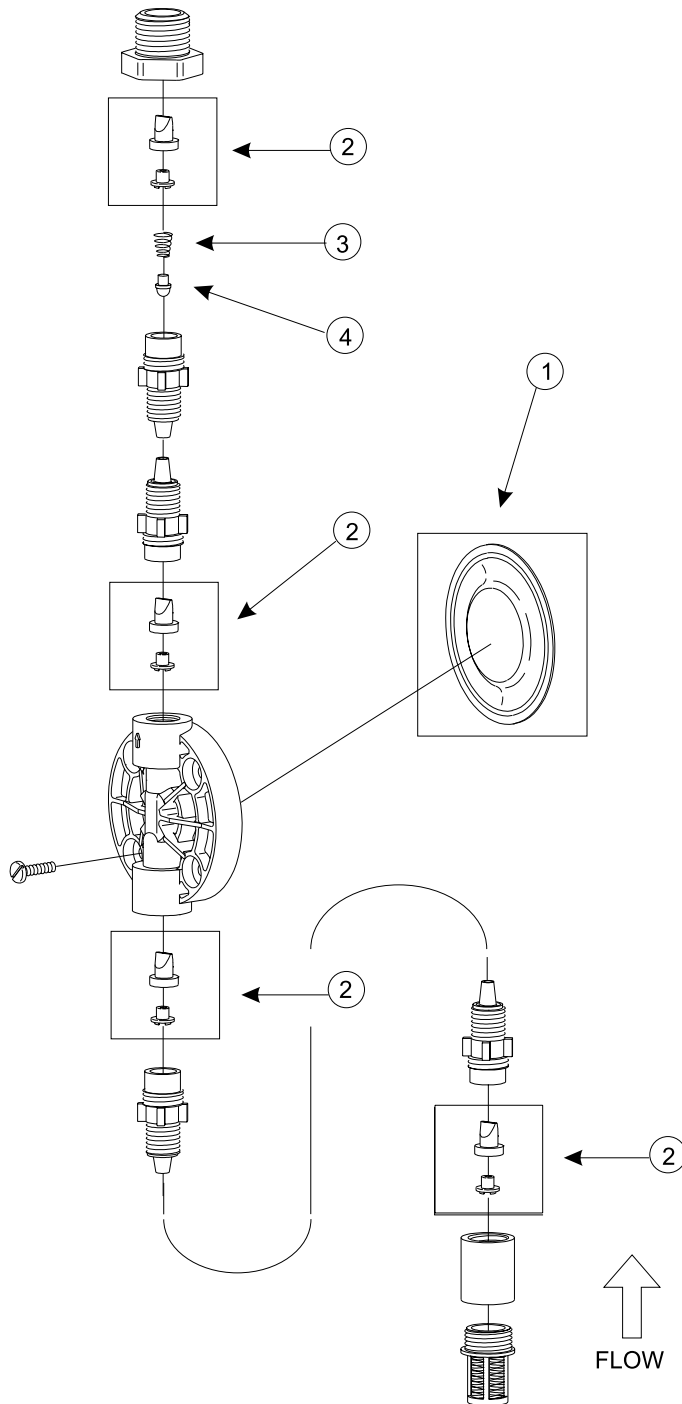


Instruction Sheet

Spare Parts Kit SP-281



For pump models ending with -281 and -280

Key	Part No	Description	Qty.
1	30981	Liquifram®, 0.8 SI, Flexiprene™	1
2	30995	Uni-Valve™ Asm., Santoprene®	4
3	31565	Spring	1
4	31623	Seal, Flexiprene™	1
5	10973	Shaft Seal (not shown)*	1

SPECIFICATIONS SUBJECT TO CHANGE WITHOUT NOTICE

NOTE:

The shaft seal (#5) needs to be replaced only if Liquifram® rupture has occurred, or if seal shows signs of damage.

Uni-Dose®

Manufactured by Liquid Metronics Incorporated

8 Post Office Square
Acton, MA 01720 USA

TEL: (978) 263-9800

FAX: (800) UNI-DOSE or (800) 864-3673



Replaces same of Rev.B 2/97
1707.C 8/99

Changing the Liquifram® (Diaphragm)

CAUTION



ALWAYS wear protective clothing, face shield, safety glasses and gloves when working near or performing any maintenance on your pump. See MSDS Sheet from solution supplier for additional precautions.



Read all steps below before proceeding.

1. Carefully depressurize, drain, and disconnect the discharge line (see Uni-Dose® Series U Instruction Manual). Place the Foot Valve into a container of water or other neutralizing solution. Turn the pump on to flush the head assembly. Once the pump head has been flushed, lift the Foot Valve out of the solution and continue to pump air into the pump head until the pump head is purged of water or neutralizing solution.
2. Remove pump head by removing the four screws that hold the head in place.
3. Set the stroke knob to 20% by rotating counterclockwise with the pump running. Stop pump by unplugging cord set.
4. Grasp outer edge of Liquifram® with your fingers and rotate it counterclockwise to unscrew it.
5. Before installing new Liquifram®, spin disk so that anti-rotation tab on disk (if present) aligns with recess in EPU assembly.
6. With stroke knob at 20%, install new Liquifram® by screwing the Liquifram® onto the threaded shaft on the pump until threads bottom out.
DO NOT SCRATCH THE SEALING FLANGE OF THE LIQUIFRAM®. Plug in pump and set the stroke knob to 100%, then unplug pump.
7. Reinstall pump head and tighten mounting screws in criss-cross pattern to 30 in-lbs.
DO NOT OVER TIGHTEN.

