



# Controllers



# Excellence through Versatility



*Located in Acton, Massachusetts, Liquid Metronics has been providing quality products and service to the water treatment industry worldwide for over 20 years.*

*Leading the way in the metering pump industry, LMI introduced the first full line of electronic metering pumps and accessories. The breadth of LMI's product line extends from low-cost metering pumps for domestic potable water treatment to highly-sophisticated custom designs for specific customer applications.*

*Today, LMI continues to shape the future of the industry by offering a complete line of metering pump controllers and accessories for a wide variety of chemical-feed applications.*

*Utilizing superior designs and industry experience, as well as a state-of-the-art facility and highly trained service representatives, LMI offers Water Treatment Professionals the quality and reliability they've come to expect.*

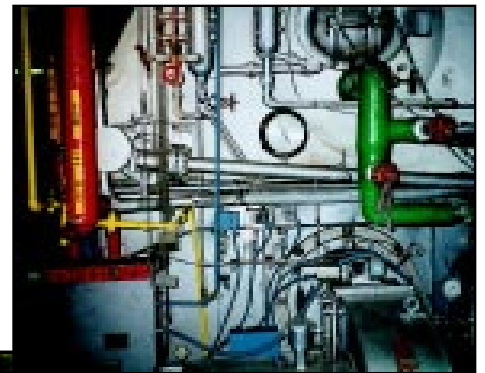
## **Boiler**

### **Cooling Tower**

### **Industrial / Municipal**

### **Water & Waste Water**

### **Pool & Fountain**



## Conductivity Controllers

### DC4500 Series



- Designed for cooling tower applications
- Dual biocide control
- Multiple inhibitor feed modes
- 0 - 20,000  $\mu\text{S}$  range
- Solenoid or motorized valve control
- Open- / closed-loop system programming
- 4 - 20 mA output [programmable]
- Built-in equipment test circuits

### DC4000 Series



- Designed for cooling tower / boiler applications
- Multiple inhibitor feed modes
- Continuous or timed boiler sampling
- 0 - 20,000  $\mu\text{S}$  range
- Solenoid or motorized valve control
- Open- / closed-loop system programming
- 4 - 20 mA output [programmable]
- Built-in equipment test circuits

## pH & ORP Controllers

### AC4000 / AC5000 Series



- Designed for cooling tower applications
- Bleed and feed indicator lights
- 0 - 5,000  $\mu\text{S}$  range
- Flow switch input and indicator
- Adjustable set point
- Meter test circuitry
- 4 - 20 mA recorder output [optional]

### DP5000 / DR5000 Series



- 0 - 14 (pH) / +2000 to -2000 mV (ORP)
- Dual-channel output fully programmable
- On/off and/or proportional pump control
- Alarm output with programmable set points
- Drain valve control with programmable timers
- 3-point proportional pump control
- Probe diagnostics with 1- or 2-point calibration

### **Clear Cover**

Clear, lockable front cover for easy viewing and tamper resistance.

### **NEMA 4X**

Totally sealed, corrosion resistant enclosure for indoor/outdoor installation.

### **4 - 20 mA**

Fully programmable 4 - 20 mA chart recorder output for remote monitoring and environmental compliance.

### **Easy Installation**

Pre-drilled mounting flanges for quick installation.

### **Nonvolatile Memory**

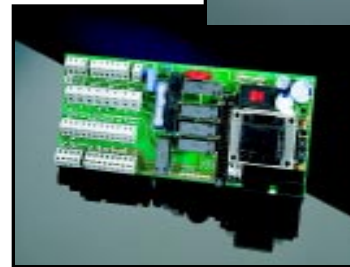
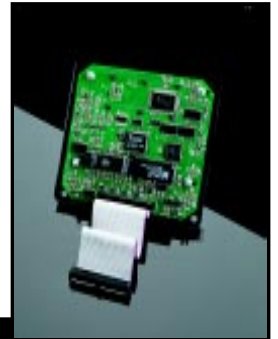
Set points stored in EEPROM prom eliminating the need for battery backup.

### **Voltages**

Various voltage and power cord options for worldwide versatility

### **Wiring Terminal Strips**

Easy access to wiring terminal strips. Available with a wide variety of wiring options for easy installation including prewired 115 VAC receptacles, 4-wire signal cables for proportional pump control, and watertight PG9 connectors for hardwire requirements.



### **Modular Manifold**

Unique modular design for easy customization to system requirements. Conductivity probes and pH/ORP electrodes are available with individual mounting tees or fully assembled with flow switch and petcock valve.

## Digital Controllers

### DPC40 Series



- Proportional output control for two (2) pumps
- Accepts 4 - 20 mA or 1 - 5 VDC inputs
- Fully programmable response to analog input
- Flow meter input
- Internal / external control for manual operation

## Flow Controllers

### FS5000 Series



- Flow switch input
- Three (3) 115 VAC outputs [flow switch response]
- One (1) 115 VAC output [continuous power]
- Inexpensive pump controller

## Accessories



- pH / ORP electrodes and manifolds
- Flow switches
- Conductivity probes and manifolds
- Boiler probes
- Motorized valves
- Pre-amplifier

**Liquid Metronics, Inc.  
8 Post Office Square  
Acton, MA 01720 USA  
(978) 263-9800  
(978) 264-9172 FAX  
[www.lmipumps.com](http://www.lmipumps.com)**