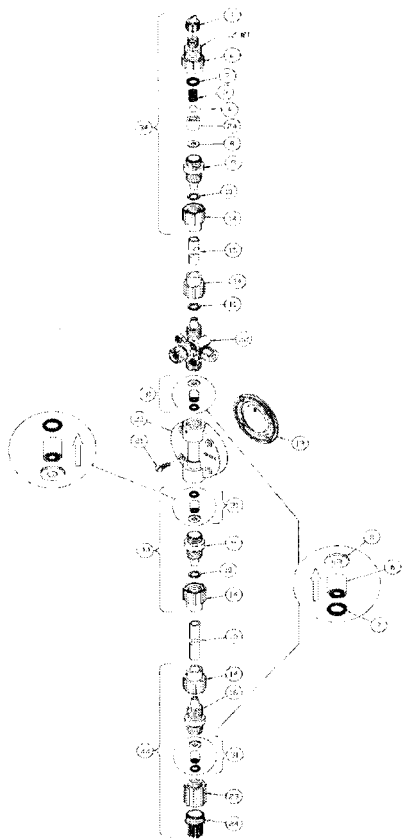


Unidose Technical Data Sheet: LE-281TU

Improved Design on Unidose Liquid Ends

Beginning August 2008, all Unidose U-Series pumps are now assembled with an advanced liquid end. This improved liquid end provides more advanced and efficient handling of specific chemicals including sodium hypochlorite. These components are not interchangeable to previous Unidose liquid ends, therefore any change must be performed as an assembly.



Number	Part Number	Description	Quantity
1	27352	FLAPPER VALVE	1
2	37351	FITTING, LIQUIPRO	1
3	37341	SPRING, COMPRESSION	1
4	10338	BALL, .375 CERAMIC, +/- .001,	1
6	37338	CARTRIDGE SUB ASM, .375	1
7	36103	ORING, .549 ID X 103MM AFLAS	1
8	36107	WASHER, CARTRIDGE VALVE	1
9	37842	FITTING, 3/8 PVC	1
10	26136	CLAMP RING, 3/8 CD	1
14	10299	COUPLING NUT, PP 3/8	1
15	25636-10	TUBING 0.25 x 0.62 x 10 FEET	1
19	30917	LIQUIFRAM, 0.9	1
20	37752	HEAD, 0.9 MOLDED PVC	1
21	10340	SCREW, 10-24 X 75 PAN HD, 316SS	4
22	38055	VALVE ASM, 3FV 3/8" PVC	1
23	36204	COUPLING, FOOT VALVE PP	1
24	10123	STRAINER, FOOT VALVE, PP SCREE	1
31	36307	CARTRIDGE ASM, .375	1
33	38032	VALVE ASM, FOOT 3/8"	1
34	38026	VALVE ASM, INJ 3/8" PVC	1

FIGURE 1: Parts breakdown for the LE-281TU Liquid End

The LE-281TU replaces all previous Unidose liquid ends. It is available as a retrofit kit for all Unidose U series pumps as part number 48913 as a complete assembly. The RPM kit for this product is RPM-281TU. It is still required that annual maintenance be performed to maintain warranty and pump integrity.

Retrofit and RPM kits are available from your Unidose distributor.

Retrofit Kit: Part Number 48913

RPM Kit Number: RPM-281TU