

FEATURES

- Accurate at low flows
- Simple and durable
- Rugged body
- High tolerance for problem fluids

APPLICATIONS

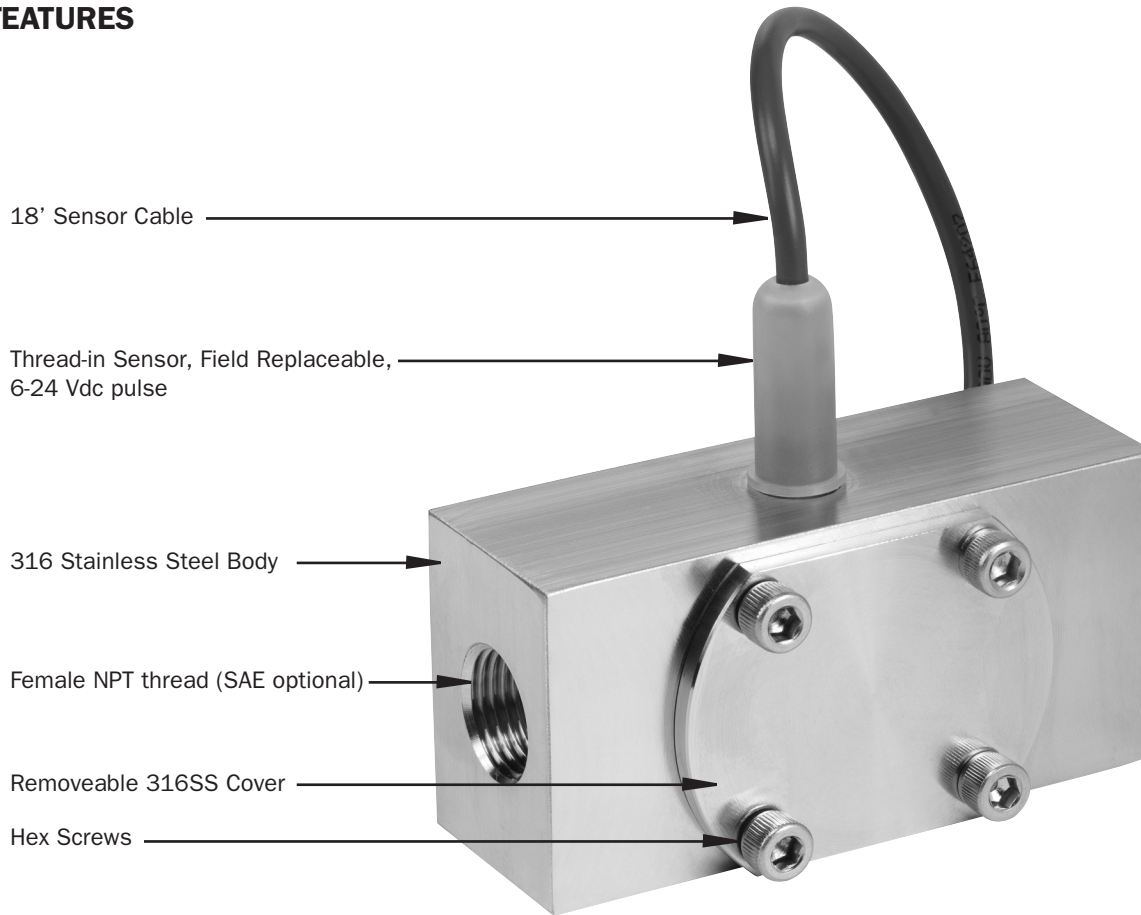
- Low flow monitoring
- Chemical batching
- Proportional chemical injection
- Fertilizer injection

GENERAL INFORMATION

The SES single-jet meter provides accurate, wide range flow metering in an extremely rugged stainless steel package. Single-jet simplicity combined with high quality jewel bearings results in long life and relatively high tolerance for problem fluids. Typical applications are chemical batching, proportional chemical injection, fertilizer injection, proportioning of spray chemicals, and general flow rate monitoring.

The sensor is easily replaced from outside the meter, and is compatible with most of the Seametrics indicators and transmitters, as well as most controls and PLC's that accept DC inputs. The standard rotor is PVDF (Kynar) and the shaft is a special nickel-bonded tungsten carbide. The optional ceramic shaft increases resistance to some concentrated chemicals. The standard O-ring is Teflon-coated Viton, with EPDM and Kalrez optional for compatibility with a variety of chemicals.

FEATURES



18' Sensor Cable

Thread-in Sensor, Field Replaceable,
6-24 Vdc pulse

316 Stainless Steel Body

Female NPT thread (SAE optional)

Removeable 316SS Cover

Hex Screws

(Internal)
Jewel Bearings
Kynar/Carbide Rotor Assembly (Kynar/Ceramic optional)
Teflon-coated Viton O-Ring (EPDM or Kalrez optional)



FIELD REPLACEMENT
OF SENSOR

SPECIFICATIONS*

Connection Ports	1/2", 3/4", and 1" female NPT thread (SAE optional)
Sensor Cable	18 feet standard (Maximum cable run 2000 ft.)
Materials	
Body	316 stainless steel
Rotor	PVDF (Kynar)
Shaft	Nickel-bonded tungsten carbide (ceramic optional)
Bearings	Ruby ring and ball
O-Ring	Teflon-coated Viton (EPDM or Kalrez optional)
Cover	316 stainless steel
Maximum Temperature	200° F (93° C)
Maximum Pressure	500 psi (35 bar)
Accuracy	+/- 1% of full scale
Power	5-24 Vdc, 2 mA min
Outputs	Current sinking pulse, 6 - 24 Vdc

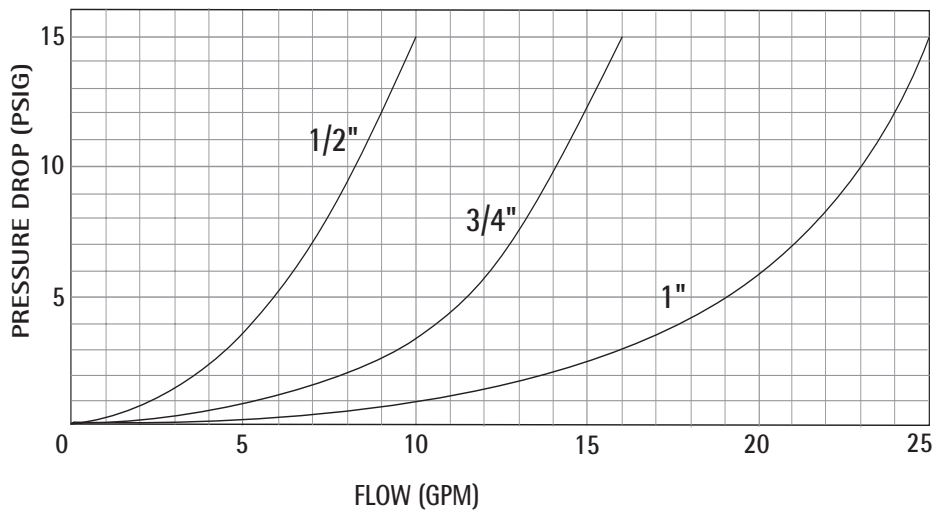
*Specifications subject to change • Please consult our website for current data (www.seametrics.com).

FLOW RANGE

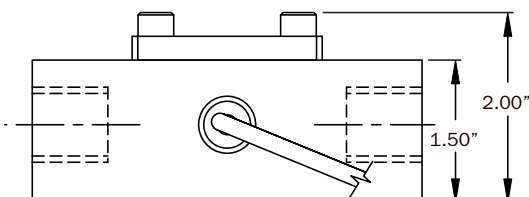
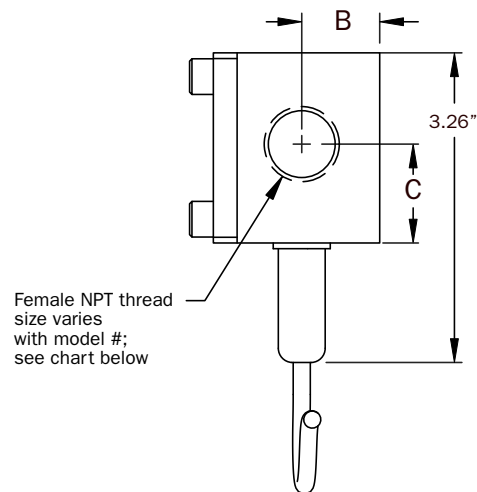
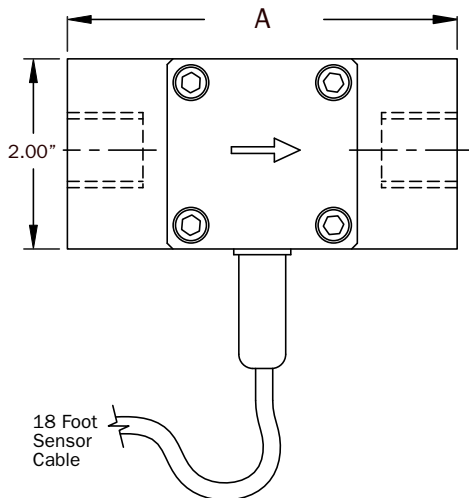
Model #	*K-Factor (pulses/Gal)	Gal/Min	Liter/Min
-050	535	0.1 - 10	0.38 - 38
-075	390	0.2 - 15	0.75 - 57
-100	220	0.5 - 25	1.9 - 95

*Nominal K-factors (based on averages) for standard 2-magnet model.
High resolution (6-magnet) K-factors are approximately tripled.

PRESSURE DROP CURVES



DIMENSIONS



Model #	NPT Thread Size	A	B	C
-050	1/2 inch	4.10	.82	1.04
-075	3/4 inch	4.10	.82	1.04
-100	1 inch	5.00	.75	1.00

HOW TO ORDER

MODEL	SIZE	OPTIONS
SES	1/2" (0.1-10 GPM) = -050 3/4" (0.2-15 GPM) = -075 1" (0.5-25 GPM) = -100	Ceramic shaft = -01 Micropower pickup (Use w/FT415 or DL75 only) = -04 High resolution rotor = -13 Kalrez O-ring = -59 Silicon carbide shaft = -68 EPDM O-ring = -69
SES		

ACCESSORIES

Rate and Total Indicator, DC powered = FT420	Batch Flow Processor = FT520
Rate and Total Indicator, Battery powered = FT415	Data Logger = DL75
Blind Analog Transmitter (4 to 20 mA) = AO55	Plug-in Power Converter, 100-115 Vac, 24 Vdc = PC3
	Panel Mount Plug-in Power Converter, 100-115 Vac, 24 Vdc = PC2

SUPPLIER CONTACT INFORMATION